

Superyacht Heesen "HEARTBEAT OF LIFE"



"HEARTBEAT OF LIFE"



"HEARTBEAT OF LIFE"



Flybridge Seating Area



Flybridge Seating Area



Flybridge Sunbathing Area



Flybridge



Foredeck



Foredeck



Aft Deck Dining Area



Aft Deck Dining Area



Main Salon



Main Salon



Main Salon



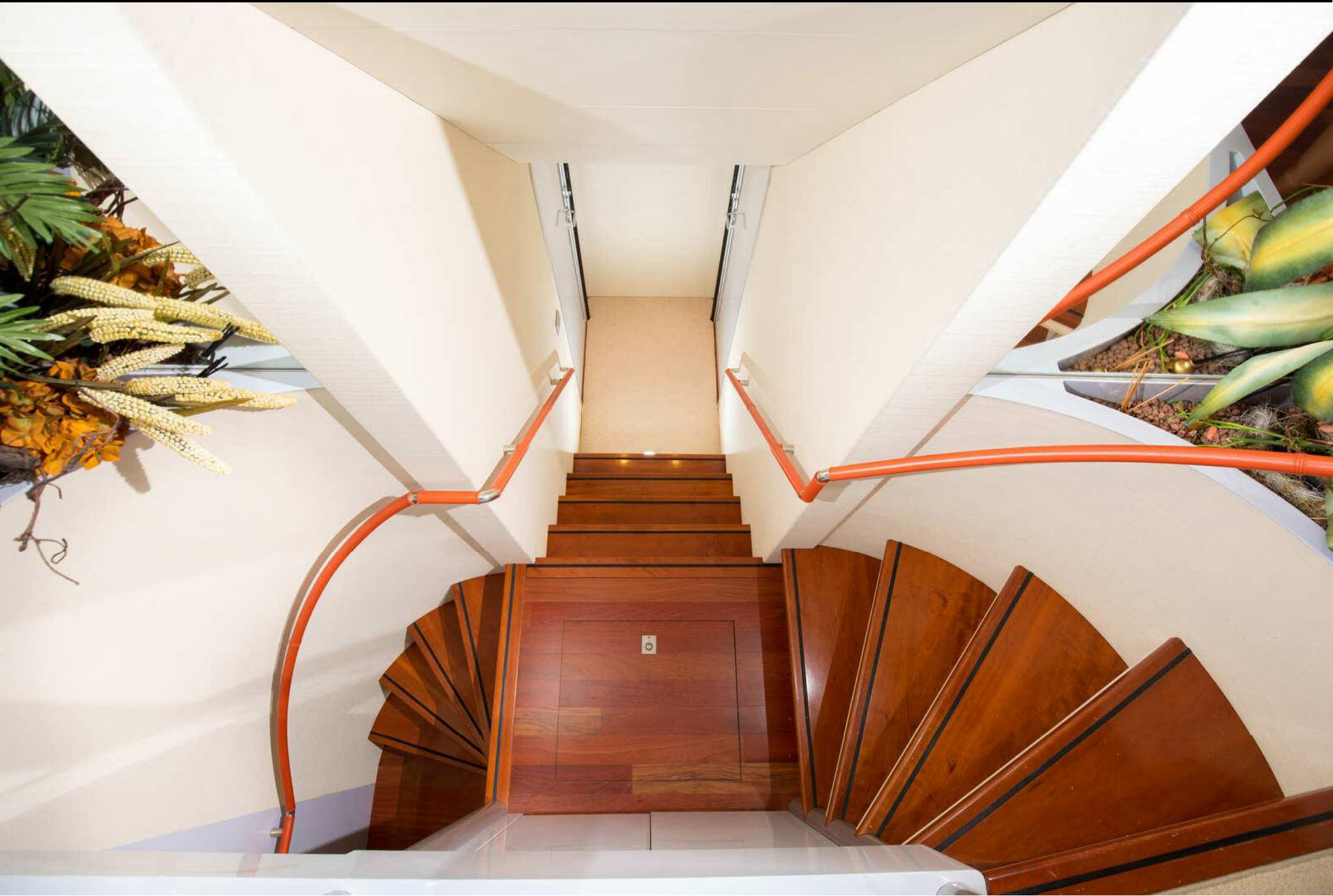
Interior Dining Area



Hallway



Stairs



Master Cabin



Master Cabin Bathroom



Master Cabin Bathroom



VIP Cabin



VIP Cabin Bathroom



Twin Cabin With Pullman Bed



DESCRIPTION

HEARTBEAT OF LIFE SuperYacht is designed by Moonen Yachts/Heesen, with her Interior by Art-Line, providing a warm and fun ambience of luxurious rosewood frames and bright orange, red and blue colourings.

The yacht offers a vast and spacious exterior, with a large variety of dining and seating formations. Her flybridge includes casual dining and an 'Indian style' bathing area underneath a retractable bimini. Inside she accommodates seven guests in 3 staterooms, a master cabin, VIP cabin and guest cabin with two singles and a Pullman bunk. A fourth room is available for a kid or nanny.

This yacht is currently on the charter market
Summer Operating Areas 2020: Licensed for Spain, W. Med-Spain/Balearics

Summer 2020 Rate: 36,000€ per week (Terms: +ALL)
6,000€ per day (Terms: + ALL)

Advance Provision (Fuel, food, drinks): 30%
VAT not included



SPECIFICATIONS

Length : 28.20 m (92' 6")

Beam : 6.40 m (21')

Draft : 3.4 m (11')

Year Built : 1989 / Refit : 2014

Builder : Heesen

Interior Designer: ART LINE INTERIORS

Flag : Maltese

Commercial/MCA/ISM Status: Commercial yacht

Number of Cabins : 3 +1

Total Guests (Sleeping) : 7 +1

Total Guests (Cruising) : 12

Cabin Configuration: 2 Double, 1 Twin +1

Number of Beds: 5 +1

Bed Configuration: 1 Pullman, 1 King, 1 Double, 3 Single +1

Number of Crew : 3

Hull Construction : Aluminium

Hull Configuration : Displacement

Engines: 2 x MTU 8V 2000 M90 series 672 Kw

Fuel consumption 200 litres/h at 10 knots

Generators: Western Light 99 kw

Gross Tons: 94

Cruising speed: 12 knots

EQUIPEMENTS

Air conditioning

Wifi

Google home control for Video in each TV

Yamaha audio control zone in the whole yacht

Main salon: 83 inch TV with surround sound home cinema

Main deck aft: 55 inch TV

Master cabin: 55 inch TV with 4 speaker audio

VIP cabin: 55 inch TV with 2 speaker audio

Guest cabin: 40 inch TV with 2 speaker audio

Flybridge: 6 speaker audio

Fore deck: 2 speaker audio

TENDER & TOYS

Tender 6 meters Ribtec with 80 hp four stroke Yamaha outboard engine

Jet ski Seadoo 255 GTX (for licenced guest only)

2 x kayaks

2 x water skis

Inflatable castle and tobogan

Inflatable 10x10 swimming pool



BEAM:
6.40_M



HULL:
ALUMINIUM



GUESTS:
7

ENGINES:
2X MTU'S 8V 2000 M90
SERIES 672 KW

DESIGNER: - EXT / INT
ART-LINE / MULDER DESIGN



DRAFT:
1.82_M



GRT:
170



CABINS:
3



CRUISING SPEED:
12_{KTS}



FLAG:
MALTA



"HEARTBEAT OF LIFE"

